

Xerox® FreeFlow®
Digital Workflow Collection
Xerox® FreeFlow® Core
Brochure



Xerox® FreeFlow® Core

Streamlined. Seamless. Simple.



What if you could run more jobs,
every day?

What if each job had fewer errors?

Interested in a solution that can
start small and grow with your
business?

How about connecting multiple
systems together to work more
efficiently?

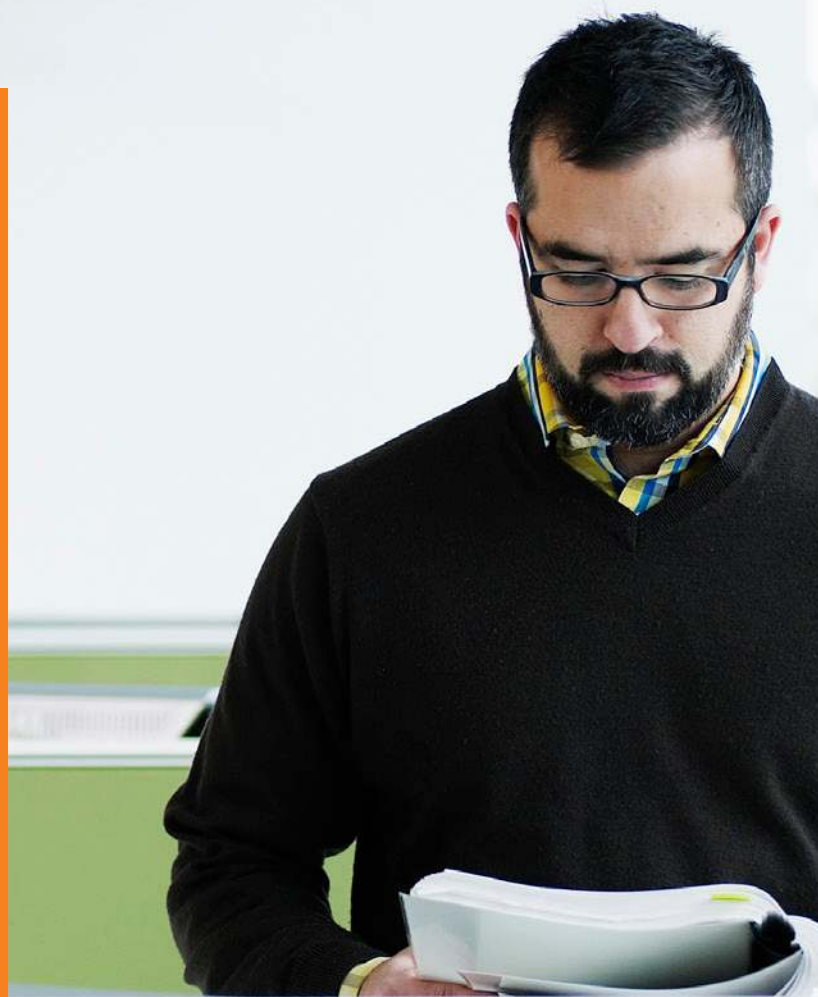
What if you could really ramp up
your entire print process, from start
to finish?

What if you could make your
current equipment and software a
lot more productive?

How about optimising your
workflow through a single point of
control?

And what if you could do all of this
automatically?

Sound too good to be true?



Well, get ready to be amazed with Xerox® FreeFlow® Core.

Workflow software has never been this strong – or this simple – until now.

This browser-based solution intelligently automates and integrates the processing of print jobs, from file preparation to final production, for a touchless workflow that operates easily, adapts effortlessly, scales quickly and delivers consistently. Enter Xerox® FreeFlow Core.

Streamline your print process to reduce your costs.

Now you can automate your print tasks with a solution that makes your entire operation more productive, day in and day out. FreeFlow Core keeps each job moving to make your organisation super efficient, so you spend less time processing jobs in-house and have more time to build new business.

Seamless Integration with Your Current – Even Hybrid – Workflows

FreeFlow Core easily integrates with your current workflow and work processes. It is a PDF-based tool, so jobs can easily be routed to any printer or any destination. Regardless of how you are getting your work done today, FreeFlow Core can step right in and quickly make your shop run more efficiently and more productively.

A simple set-up-and-go solution that's easy to use.

FreeFlow Core is browser-based and includes EasyStart workflows to help users through the process of creating and managing workflows. It hides the complexity of individual operations and workflow programming while it provides an intuitive graphical user interface. The simple drag-and-drop interface means you don't need a software engineering degree to create workflows. Now anyone can easily manage your incoming jobs and get them done in a fraction of the time.

You choose how the software is deployed.

FreeFlow Core has an on-premise solution configuration. You install, configure and run the software from your own computer server. Or let Xerox host the software for you with the new Xerox® FreeFlow Core cloud configurations. We set up, host and manage the software for you. You just log in and start automating.



Affordable for Any Size Operation

Automation is no longer just for big guys. Whether your organisation is three or 300 people, FreeFlow Core offers a highly productive workflow solution. Multiple product configurations and attractive price points mean even small- to medium-sized organisations now have automation within reach. And no matter how many print engines you have, there is never an additional charge.

Xerox® FreeFlow® Core On-Premise

Xerox® FreeFlow Core has an on-premise solution configuration designed to serve as the backbone of all our new Xerox® production workflow solutions. On-premise means you run the software on your computer server, and have total control over configuration and integration with your current workflow systems and printers. FreeFlow Core on-premise is best suited for customers looking for advanced automation, wider integration and access to extended automation solutions from Xerox.

You choose the options that are right for you...

Xerox® FreeFlow Core – A total solution for entry-level automated print production, including JDF/JMF connectivity to external systems. It lets you build workflows for conversion, preflight, image enhancement, imposition and print job submissions.

FreeFlow Advanced Prepress module – Provides powerful tools for PDF optimisation, colour management, document manipulation and annotation. This module helps you speed through a wide range of file optimisation actions, including adding barcodes, pressmarks, text and images to documents.

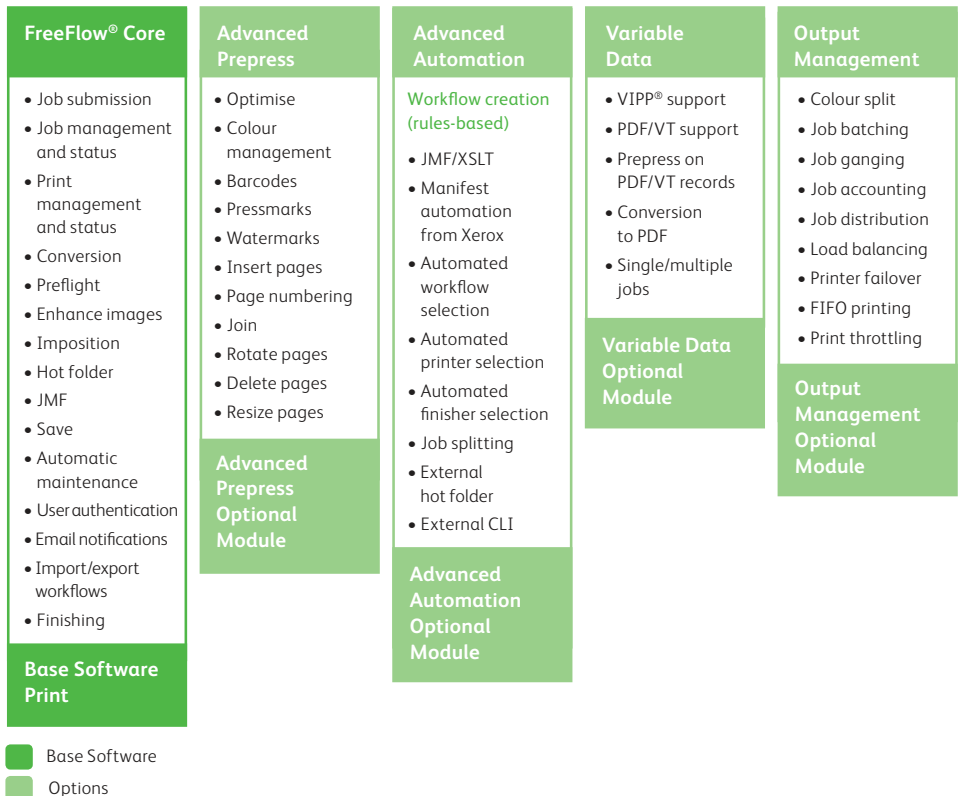
FreeFlow Advanced Automation module – Automates your entire production process by transforming manual steps in your workflow into programmed actions, with services that automate job processing decisions. Enables the use of any Hot Folder or CLI application within an automated workflow.

FreeFlow Output Management module – Adds the ability to implement even smarter decision-making regarding when and where your jobs will be printed. Also enables automated aggregation and ganging for increased print and post-print productivity.

FreeFlow Variable Data module – This module enables FreeFlow Core to accept Xerox® Variable Information Production PrintWare (VIPP®) jobs and PDF/VT jobs. The FreeFlow VI Suite uses VIPP technology to deliver benchmark productivity in personalised communication workflows; PDF/VT is an emerging variable data standard and FreeFlow Core has full PDF/VT record processing support.

The Automated Solution That Leverages 10 Years of Experience

Xerox® FreeFlow® Core is a new product, yes – but it's also an innovative digital product platform that enables a wide range of highly targeted solutions. It works with your current operation and expands its capabilities as your business grows. Xerox has been in the prepress automation business for more than 10 years, and we've leveraged our experience and learning from customers like you to develop a next-generation solution for automating every step in your print production process.



Xerox® FreeFlow® Core Cloud Configurations

Xerox® FreeFlow Core has new cloud-based configuration offerings of the solution. Running in the cloud means Xerox will install the software on our cloud servers. We will configure and manage the solution maintenance. You simply access your secure system from a Web browser. The system is all yours to build your own linear or rules-based workflows; we just make sure it's running smoothly for you. FreeFlow Core in the cloud is an attractive option for organisations that don't have dedicated information technology staff, or just don't want the responsibility of maintaining software solutions locally.

What does moving to the cloud really mean?

Cloud solutions have recently seen tremendous growth across all industries. And given the relative newness of this technology, there are always questions. So, let's talk about what FreeFlow Core in the cloud means to your business beyond the world-class automation engine.

- Eliminate the need to install and maintain the solution
- The latest computer server hardware and best-in-class support
- Automatic system backups, to keep your solution safe
- Industry standard server security and file transfer security
- Set system configuration and hardware configuration for predictable performance
- Lower upfront cost, given you are not 'buying' the solution
- No additional charges for volume of jobs processed or printers accessed
- Consistent usage charge means predictable operating expenses
- Shorter contract commitments give you more long-term flexibility
- Secure print job submission from cloud to local printer destinations

Xerox® FreeFlow® Core in the cloud comes in two configurations.

Xerox® FreeFlow Core Cloud is available as a set configuration that includes all the functions essential to automating and simplifying the majority of current workflow operations. The software configuration and hardware configuration have already been picked for you. You simply log on and begin building your own automated workflows. FreeFlow Core Cloud also includes automatic system backups, so you can rest assured that your workflows and jobs will be kept safe automatically, and at no additional charge.

The newly released base cloud configuration enables all the functionality essential for automating most common prepress tasks.

The advanced cloud configuration includes all the functionality of the base version plus advanced functionality for modifying jobs, decision making and non-linear workflows.

Both solutions allow you to simply log on and begin building your own automated workflows. Let Xerox manage installation, maintenance and backups.

FreeFlow® Core Cloud

- Job submission
- Job management and status
- Workflow selection
- Conversion
- Printer management and status
- Preflight
- Enhance images
- Imposition
- Automatic maintenance
- User authentication
- Cloud Print client

Base Software

FreeFlow® Core Cloud

- Job submission
- Job management and status
- Workflow selection
- Printer management and status
- Automated printer selection
- Conversion
- Automated workflow selection
- Preflight
- Enhance images
- Imposition
- Automatic maintenance
- User authentication
- Optimise
- Colour management
- Barcodes
- Pressmarks
- Watermarks
- Insert pages
- Delete pages
- Page numbering
- Join
- Rotate pages
- Resize pages
- Job splitting
- Job routing
- Cloud Print client

Advanced

Give your business a lift with truly automated workflows.

Specifications for Xerox® FreeFlow® Core (on-premise version)

Server Specifications

CPU

- Intel® Core™ i7, 3.3 GHz (minimum)
- Intel Xeon® Processor E5, 2.5 GHz (recommended)

RAM

- 8GB (minimum)
- 16GB (recommended)

Disk Storage

- 500GB HDD (minimum)
- 500GB SSD (recommended)

Monitor Resolution

- 1280 x 1024 (minimum)
- 1900 x 1200 (recommended)

Operating System

- Microsoft® Windows® 8.1 Pro or Enterprise (64-bit)
- Microsoft Windows 10 Pro or Enterprise (64-bit)
- Microsoft Windows Server 2012 R2 Update – Standard (64-bit)

Supported Browsers

- Microsoft Internet Explorer® 11 or higher on Windows 8.1, Windows 10 and Microsoft Windows Server 2012 R2 Update
- Mozilla® Firefox® 45 or higher on Windows 8.1, Windows 10 and Microsoft Windows Server 2012 R2 Update, Apple® Mac OS X® 10.9 or later
- Apple Safari® 9.0.2 or higher on Mac OS X 10.9 or later

Other Software Requirements

- Microsoft .NET Framework version 3.5 SP1
- Microsoft .NET Framework version 4.6
- Microsoft IIS 7.5 or higher
- Microsoft SQL Server® 2014 Express with SP1 or SQL Server 2014 Standard
- Microsoft Silverlight® 5.1.41212.0 or higher

Optional Software

- Microsoft Office 2013 or Office 2016 (64-bit) (if conversion of native file formats to PDF is required)
- Adobe® Acrobat® Reader (to open and view PDF files within the browser window)

Components

- Job Submission
- Job Management and Status
- Print Management and Status
- Enhanced Workflow Builder
- Connections Setup
- User Access Setup
- Email Event Notification
- Import/Export Workflows

Job Inputs

- Job Submission Client
- Hot Folder
- Manifest Automation from Xerox
- Job Messaging Format (JMF)
- JMF/(Extensible Stylesheet Language Transformations (XSLT)

Job Outputs

- External Hot Folder integration
- External CLI integration
- Programmed print job submission
- Enhanced job routing
- Save
- IPP print

Services

- Preflight
- Enhance images
- Imposition
- Save
- Finishing
- Print
- Optimise
- Colour management
- Barcodes
- Pressmarks
- Watermarks
- Insert pages
- Page numbering
- Join
- Rotate pages
- Delete pages
- Resize pages
- Colour split
- Job distribution
- Job batching
- Job ganging
- Load balancing
- Printer failover
- FIFO printing
- Print throttling
- Job accounting

Input File Formats

- Microsoft Word
- Microsoft PowerPoint
- Microsoft Publisher
- Microsoft Excel
- Adobe PostScript
- PDF
- EPS
- JPEG
- JPG
- PNG
- TIFF
- Xerox VIPP*

*Requires the Variable Data optional module

Let us do some of the work for you. You just log in and start automating.

Client PC Specifications for Xerox® FreeFlow® Core (cloud configurations)

Client PC Specifications

Processor

- Intel® Xeon® Processor E5, 2.5 GHz or better

System Memory

- 8GB

Hard Drive

- 10GB of available free space

Monitor Resolution

- 1280 x1024 (minimum)
- 1900 x 1200 (recommended)

Internet

- 100Mbps (minimum)

Operating System

- Microsoft® Windows® 8.1 Update (64-bit) – Pro or Enterprise
- Microsoft Windows 10 Pro or Enterprise
- Microsoft Windows Server® 2012 R2 Update – Standard

Infrastructure

- Microsoft .NET Framework 4.6 or higher
- Microsoft Silverlight® 5.1.41212.0 or higher

Web Browser

- Microsoft Internet Explorer® 11 or higher via compatibility mode
- Mozilla® Firefox® 45 or higher
- Apple® Safari® 9.0.2 or higher

Application Software

- Adobe® Acrobat® Reader (to open and view PDF files within the browser window)

Components

- Job Submission
- Job Management and Status
- Print Management and Status
- Enhanced Workflow Builder
- Connections Setup
- User Access Setup
- Cloud Print client

Job Inputs

- Job Submission Client (for non-native Windows file submission)
- Core Submit Tool (for native Microsoft Office file submission)

Job Outputs

- Programmed print job submission
- Job routing
- IPP print
- Job splitting
- Routing

Input File Formats

- Microsoft Word
- Microsoft PowerPoint
- Microsoft Excel
- Adobe PostScript
- PDF
- EPS
- JPEG
- JPG
- PNG
- TIFF

Services

(Cloud Base Configuration)

- Preflight
- Enhance images
- Imposition
- Print

Services

(Cloud Advanced Configuration)

- Preflight
- Enhance images
- Imposition
- Print
- Optimise
- Colour management
- Barcodes
- Pressmarks
- Watermarks
- Insert pages
- Delete pages
- Page numbering
- Join
- Rotate pages
- Resize pages
- Job splitting
- Job routing

And next, the sky's the limit.

Want more ways to integrate and automate? We're on it.

There are so many ways to combine Xerox® FreeFlow® Core with applications and solutions that fit your business model – and we've already started with these ultra-productive combos you can use today.

The Xerox® IntegratedPLUS Finishing Solution, with Inline, Offline and Dual Mode Flexibility

Take your jobs from input to finished output with virtually no operator involvement. Xerox® FreeFlow Core software powers this solution by automating file preparation and programming. The entire process from job input to finished product can be completed without operator intervention.

To learn more about the Xerox® IntegratedPLUS Finishing Solution, visit www.xerox.com/integratedplusfinishing

XMPie® PersonalEffect® StoreFlow™, and StoreFlow Cloud, Automated Web-to-Print Solutions

Combine the strength of StoreFlow's end user e-commerce experience with the power of FreeFlow Core's document workflow management to deliver a storefront solution unrivaled in its depth and feature set. XMPie PersonalEffect StoreFlow is a Web-to-Print software solution that creates and manages online stores and marketing portals with simple personalisation. This solution now comes bundled with FreeFlow Core to provide built-in prepress automation, giving you two world-class solutions in one box.

To learn more about XMPie PersonalEffect StoreFlow, visit www.xmpie.com/StoreFlow

FreeFlow Digital Publisher, for Value Beyond Digital Print

Start automating your print manufacturing processes today and set the groundwork for multichannel communications tomorrow. Digital Publisher lets you take the content you already print today and deliver it to a broader audience electronically – to add value, automatically. This e-publishing solution makes creating rich content for electronic presentation fast and easy across a variety of formats and devices. The best part is that it's all enabled by FreeFlow Core, so you can create unified workflows for print and electronic documents at the same time.

To learn more about FreeFlow Digital Publisher, visit www.xerox.com/digitalpublisher

Connect and learn more.



Follow Us on Twitter
@XeroxProduction
twitter.com/XeroxProduction



Share Your Thoughts
Digital Printing Hot Spot Blog
digitalprinting.blogs.xerox.com



Tune into Our
YouTube® Channel
Corporate Videos
youtube.com/xeroxcorp



Like Us on Facebook
Xerox Digital Print
facebook.com/XeroxDigitalPrint

www.xerox.com/automate

